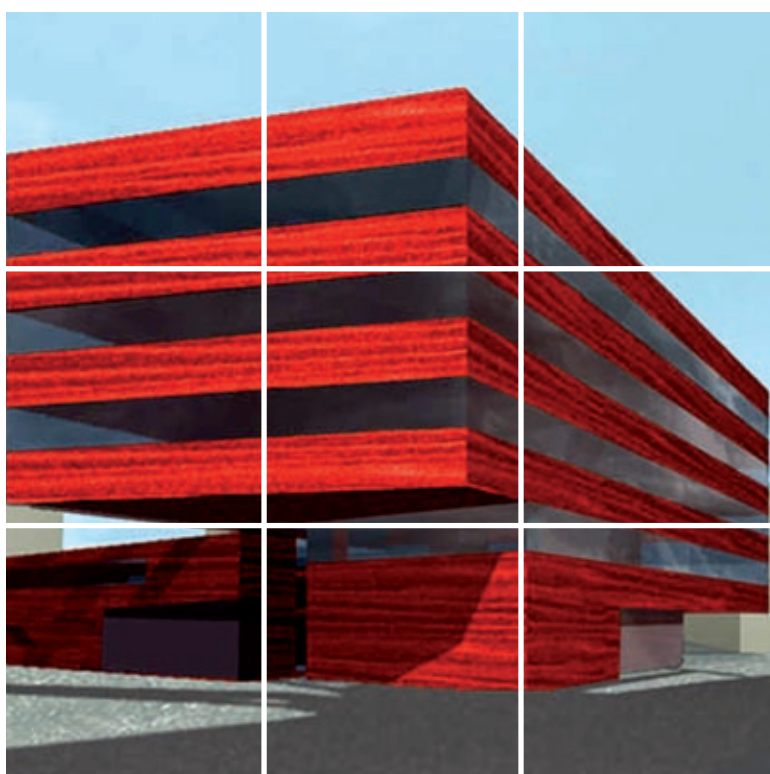
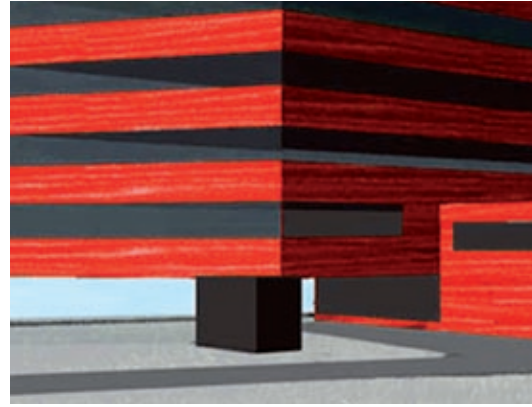
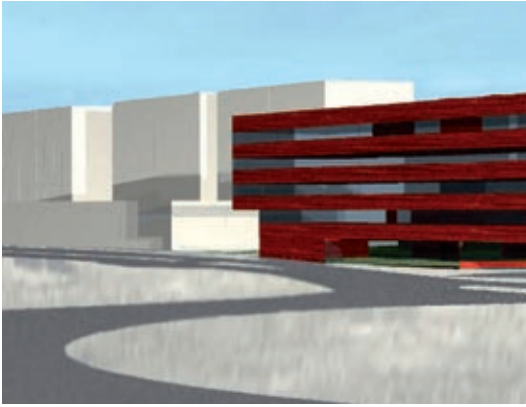


administrativní budova  
Eleven Building





## Why Eleven Building?

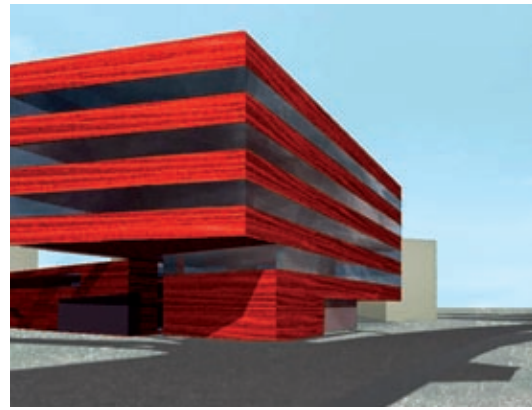
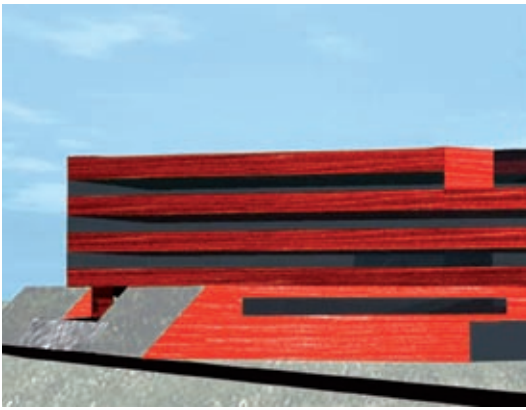
- the Chodov metro station and public-transport stops within walking distance
- only 500 m from access to the D1 motorway
- neighbouring the Chodov shopping centre and The Park
- catering options and shopping in the Chodov shopping centre
- sporting activities and other facilities within walking distance (fitness centres)

## Basic facts

- project location: Prague 11-Chodov city district
- 2 below-ground floors and 5 above-ground floors
- current dimensions of the plot: 9 400 m<sup>2</sup>
- gross floor space: 8 425 m<sup>2</sup>
- office space: 5 681 m<sup>2</sup>
- number of parking places in the building: 161
- number of parking places outside: 20
- construction time: 12 months

Easy accessibility from the Chodov metro station, public transport stops and the D1 motorway.

Open plan layout = variable internal spaces.



## Construction

- “open plan” – variable solutions for the internal spaces
- ceiling height: 3 m (construction height of above-ground floors: 3.6 to 3.8 m)
- central heating with exchange station (CZT)
- the building is prepared for varying solutions – air-conditioned / not air-conditioned
- façade windows can open, split according to the layout of the office modules with exterior blinds
- UPS, electronic fire alarm system (EPS), electronic access control system (EKV), CCTV, STA, structured cabling, and a backup power supply can be added (DA)

You will have a prestigious address

neighbouring important companies

Honeywell ■  
SONY ■ B. Braun  
■ DHL ■ IBM  
■ DELL ■ BP ■  
GE Money Bank  
■ Aral

Safe and secure parking places in the building's underground parking garage.

Office space: 5 681 m<sup>2</sup>.

# Project location



**Skanska Reality a.s.**  
[www.skanska.cz](http://www.skanska.cz)

Sales Department  
Ing. Vlastimil Seibert, Sales Manager  
+420 267 095 289  
Ing. Jan Fidler, Regional Sales Manager  
+420 267 095 372  
Kubánské nám. 11  
100 05 Praha 10-Vršovice