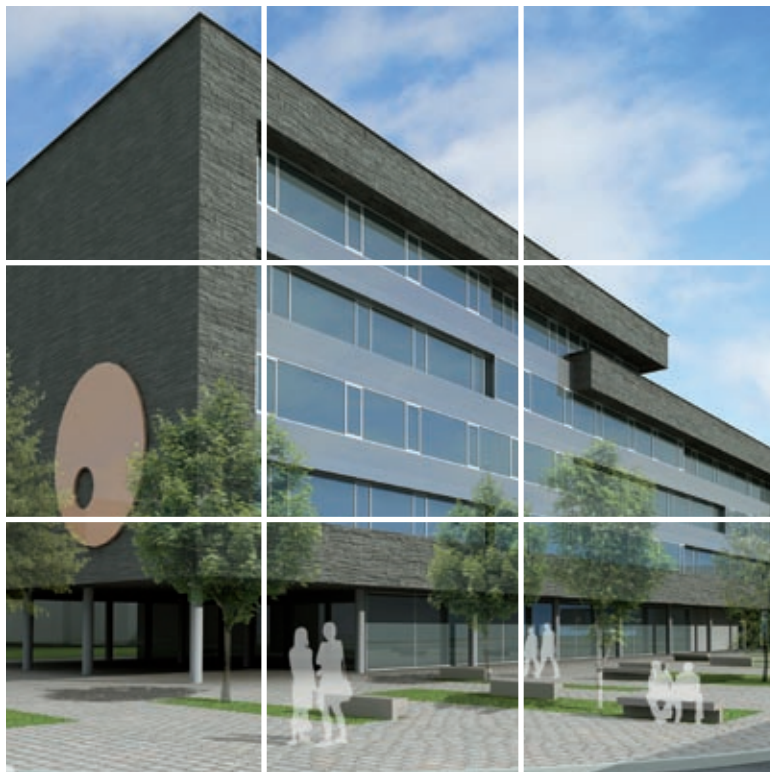
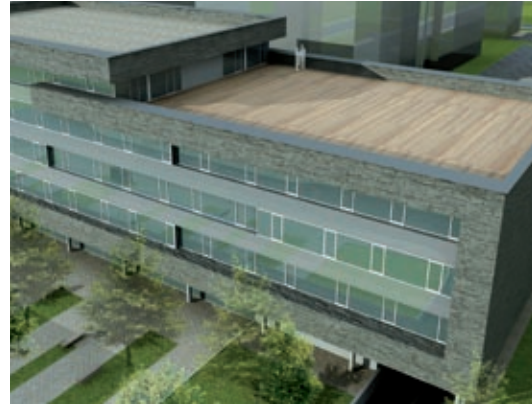


Gemma

Administrative Building





Why GEMMA?

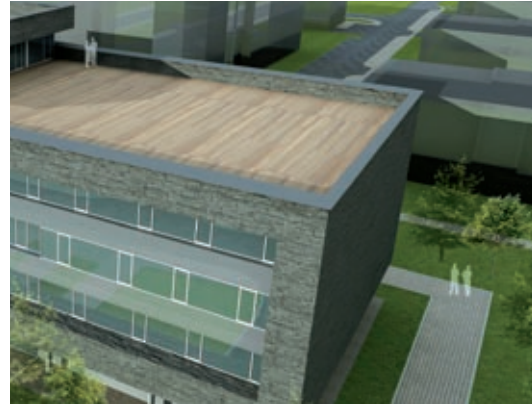
- the attractive design of the building
- public-transport stops within walking distance
- near the Chodov metro station
- only 500 m from access to the D1 motorway
- 2 below-ground floors and 4 above-ground floors + recessed 5th above-ground floor
- neighbouring the Chodov shopping centre and The Park administrative centre
- sporting activities within walking distance (squash, tennis, swimming pool)
- impossible-to-miss corner location
- catering options at Top Hotel Praha and in the Chodovec City area

Basic facts

- project location: Prague 11-Chodov city district, at the corner of Pyšelská and Knovízská Streets
- current dimensions of the plot: 4 980 m²
- gross floor area of the above-ground floors: 6 160 m²
- total office space: 4 667 m²
- number of parking places in the building: 95
- construction time: 12 months
- number of employees in the building: 400

Easy accessibility from the Chodov metro station, public transport stops and the D1 motorway.

Open plan layout = variable internal spaces.



Construction

- “open plan” – variable solutions for the internal spaces
- a reinforced concrete monolithic skeleton with internal stiffening reinforced concrete monolithic and brick walls
- ceiling height: 3 m
- comprehensively managed forced ventilation and air-conditioning system
- central hot-water heating system with exchange station (CZT)
- strip windows and sill bands sheathed with a suspended concrete panel
- backup system (DA), UPS, electronic security system (EVS), electronic fire alarm system (EPS), electronic access control system (EKV), automatic telephone exchange, intercom

You will have a prestigious address

in proximity to important companies

- Top Hotel Praha
- Mercedes-Benz
- Agrofert
- OCé
- KSB

Safe and secure parking places in the building's underground parking garage.

Office space: 6 160 m².

Project location



Skanska Reality a.s.
www.skanska.cz

Sales Department
Ing. Vlastimil Seibert, Sales Manager
+420 267 095 289
Ing. Jan Fidler, Regional Sales Manager
+420 267 095 372
Kubánské nám. 11
100 05 Praha 10-Vršovice